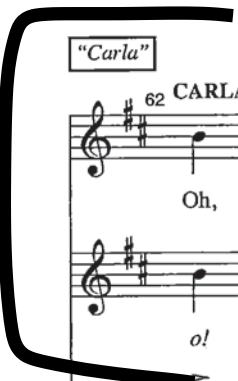


58 59 60 61

Car - na - val \_\_\_\_\_ del Bar - ri - o! \_\_\_\_\_

Car - na-val! Del Bar - ri -

F#7/A# Bm F#7/C# Bm



"Carla"

62 CARLA: 63 3

Oh, me, me, me! Da - ni, I have a

o!

Bm

64 65 66 DANIELA: 67 3 3

ques - tion. I don't know what you're can - tan - do. Just make it up as you

*mf* Em *simile* Bm

68 69 70 71

go! We are im-pro-vi-san-do! Lai le lo lai lo le

F#7 Bm

72 73 74 75 3 3

lo lai! You can sing an-y-thing! Car-la, what-ev-er pops

Em Bm

76 3 77 78 CARLA:

in-to your head, Just so long as you sing! Uh... My

F#7 Bm B7/D#

79 3 3 80 3 3 81 3 3 82 3

Mom is Do-mi-ni-can-Cu-ban, my Dad is from Chi-le and P. R., which means: I'm

Em Bm F#7 N.C.

figuring it out...

83 3 3 84 3 85 3 86 [CROWD cheers]

Chi - le - Do - mi - ni - cu - ri - can, but I al - ways say I'm from Queens!

*mf* Em Bm *f* N.C.

"Carnaval Chorus"

SONNY/PG/M3/M4/M5/M6  
DANI/CARLA/W4/W5:

87 88 89 90 91

Car - na - val del Bar - ri - o! Car - na - val

M1/M2/GP  
W1/W2/W3:

Car - na - val! Bar - ri - o!

A7 D A7 D F#7/A#

"Vanessa"

VANESSA:

92 93 94 95 96

del Bar - ri - o! Yo! Why is ev - 'ry one so

Car - na - val! Del Bar - ri - o!

Bm F#7/C# Bm