

Nala Callback



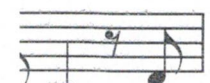
The riv-er's



ken. —



now I —



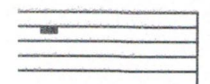
may



I can-not



t I'll re -



and,

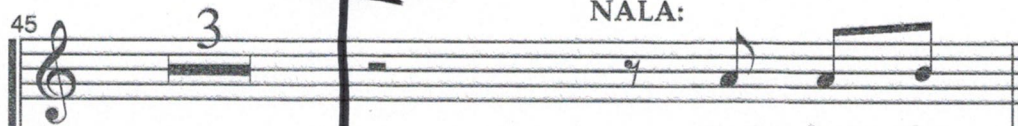


tear - stained, dry land. Take this —



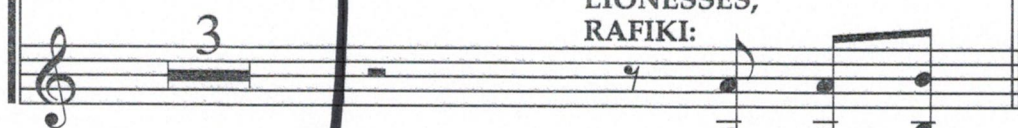
with you, fa tshe le - so. —

START



NALA:

And where the



LIONESSES,
RAFIKI:

And where the



jour - ney — may lead me, —



jour - ney — may lead you, — let this



let — this prayer be my guide. —



prayer — be your guide.

Though it may

53 (NALA):
Though it may take me so far a-way,

(LIONESSES):
take you — so far a-way, al-ways re-

55
I'll re-mem-ber my pride.
mem - ber your... And where the

(RAFIKI enters. As NALA begins her journey, RAFIKI blesses her.)

57
Ngi - zo bu-ya-bo. Ngi - zo bu-ya-bo.
jour - ney — may lead you, let this

59
I will re-turn, I — will re-turn. Be - so bo.
prayer — be your guide. Though it may

61
Ngi
take

63
mem

(The L

65
Oh,

67
Be - so

(NAL

al-ways re-

re the

blesses her.)

a-bo.

let this

Be - so bo.

h it may

61

Ngi - zo bu-ya-bo, I will re-turn.

take you— so far a-way, al-ways re -

63

Ngi - zo bu - ya-bo.

mem - ber your pride.

(The LIONESSES disperse.)

65

Oh, ngi - zo bu - ya - bo.

67

Be-so bo, my peo-ple. Be - so bo.

(NALA exits. RAFIKI exits in the other direction.)

END