

Simba and Nala Call back

ENSEMBLE:



Can you feel— the love— to-night,



the peace the eve - 'ning brings?



world, for once, in per - fect har-mo-ny

(SIMBA and NALA re-enter separately.)

START



SIMBA:

So

~~all its liv - ing things~~



ma - ny things to tell— her, but



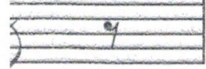
how— to make her— see the



tom line:



The



h.



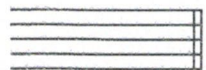
there's



this ro -



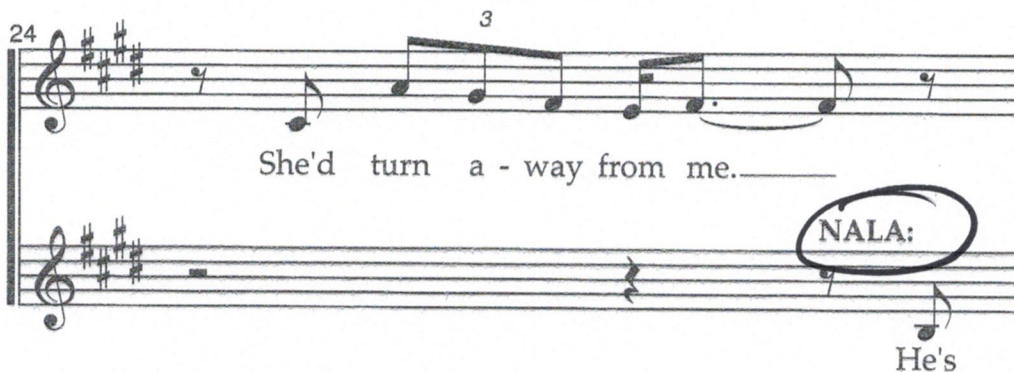
s in the




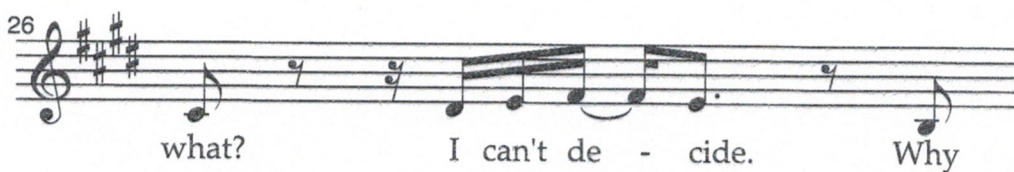
4 exit.)

(SIMBA):


23 

24 

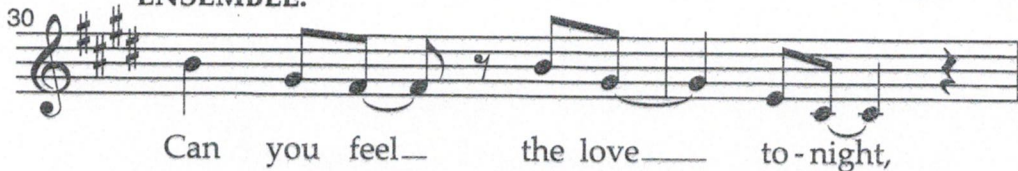
25 

26 

27 

28 

ENSEMBLE:

30 

32 

34 

36 

(From
melod

38 

40 

42 

44 

46 